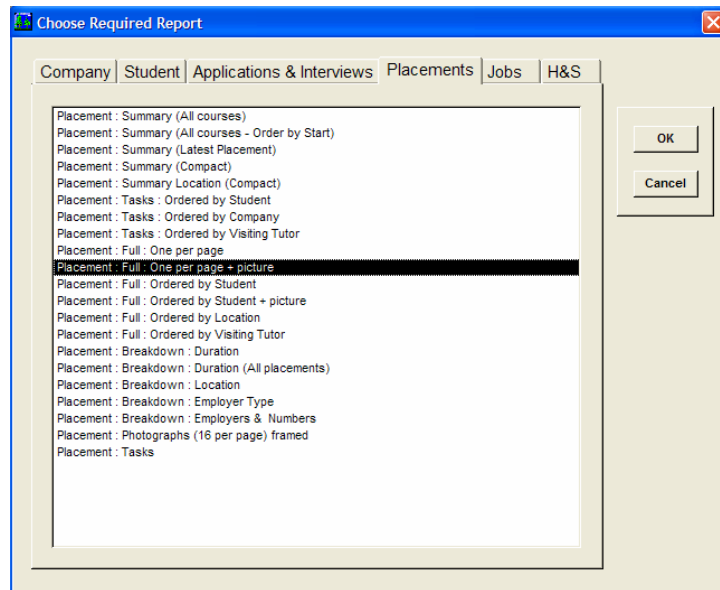




New Features in Version 11.4b (November 2006)

- The Report and Mail Output Dialog forms now incorporate Tabs to group items together and facilitate easier selection. The new Report form is shown below.



- The Setup submenu form has been re-designed to cope with the growing number of user definable fields.

New Features in Version 11.4c (July 2007)

- A new Placement Summary report has been added which includes the student ID / Ref field as well as the student name. (First option in Placement Report List)
- PineSoft Filter by Form options have been modified to ensure that records remain in alphabetical order.

Developments

- V11.4d incorporates a revised setup for installation on a Windows Vista platform.
- A new version of PineSoft using Access 2007 is available. Presently users would need to have their own copy of Office 2007 on their PC to use this version, so please let me know if your university makes the switch. A demonstration of the exciting new features in the Access 2007 version will be made available on the PineSoft website in the near future.